



TUSCOLA COUNTY DRAIN COMMISSIONER

Robert J. Mantey

125 W. Lincoln Street, Ste. 100

Caro, Michigan 48723

WALTON DRAIN

**NOTICE OF DAY OF REVIEW OF DRAINAGE DISTRICT BOUNDARIES
AND REVIEW OF APPORTIONMENTS**

DATE: Thursday, September 15, 2016

TIME: 9:00 a.m. – 5:00 p.m.

LOCATION: Office of the Tuscola County Drain Commissioner
125 West Lincoln Street, Suite 100
Caro, Michigan 48723

QUESTIONS: (989) 672-3820

The Day of Review is an opportunity to review the Walton Drain Drainage District boundaries and apportionment of benefit with the Drain Commissioner or a staff member. A map of the proposed Drainage District boundary revisions can be found on the reverse side of this notice and on the Tuscola County website at: www.tuscolacounty.org.

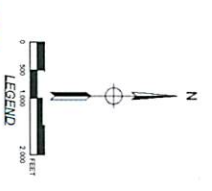
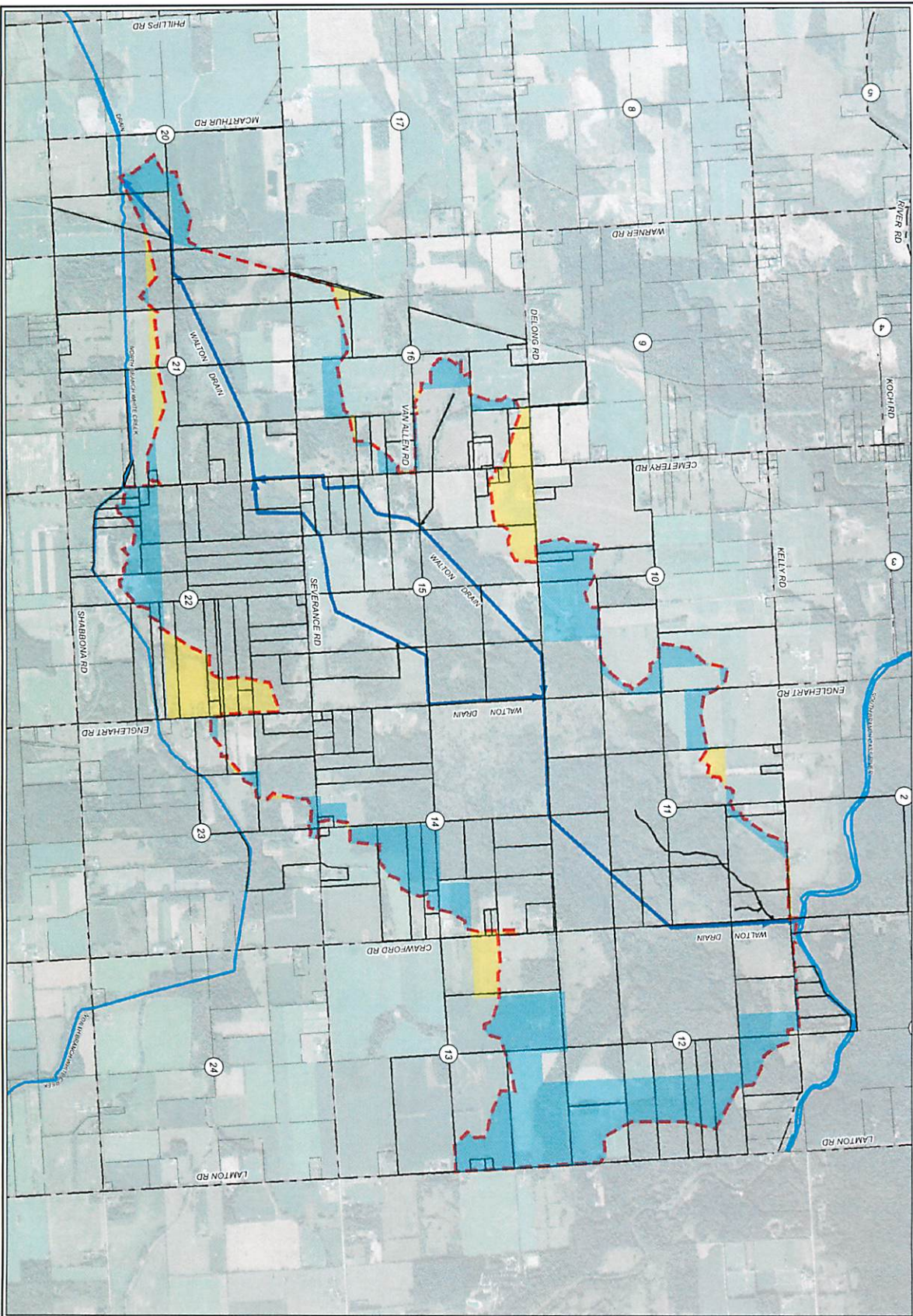
The Drain Commissioner, engineers, and/or other staff members will be available to assist individuals throughout the day, and make revisions where necessary. There is no need to schedule an appointment for a specific time on the Day of Review. The computation of cost for the Drain will also be available at the Day of Review. Drain assessments are collected in the same manner as property taxes and will appear on your winter tax bill. If drain assessments are being collected for more than one (1) year, you may pay the assessment in full with any interest to date at any time and avoid further interest charges.

Persons with disabilities needing accommodations for effective participation in the Day of Review should contact the Drain Commissioner's Office at the number noted above (voice) or through the Michigan Relay Center at 7-1-1 (TDD) at least 24 hours in advance of the Day of Review to request mobility, visual, hearing or other assistance.

You may appeal the Drain Commissioner's decision to revise the district boundary to the Tuscola County Circuit Court within ten (10) days, and you may also appeal the determination of apportionments to the Tuscola County Probate Court within ten (10) days.



WALTON DRAIN W-003
TUSCOLA COUNTY, MICHIGAN
 TUSCOLA COUNTY DRAIN COMMISSIONER - ROBERT J. MANTEY



- LEGEND**
- DRAINAGE DISTRICT BOUNDARY
 - APPROXIMATE DRAIN LOCATION
 - APPROXIMATE LOCATION OF OUTLET
 - OTHER TOWNSHIPS
 - LAND RECOMMENDED TO BE ADDED
 - LAND RECOMMENDED TO BE REMOVED
 - WATSON LOTS
 - PARCELS
 - ROADS
 - LOCAL POLICE

PRELIMINARY
9/15/2016 DAY OF REVIEW
DRAINAGE DISTRICT BREAKDOWN
 PRESENT OWNERS ASSESSABLE ACRES

TOTAL ACREAGE IN DISTRICT: 3,573.04
 LENGTH OF DRAIN: 2.64 MI
 WALTON DRAIN

DATE	BY	REVISION
09/15/2016	DR	1

LSG Engineers & Surveyors
 PROJECT NO. DR
 SHEET COVER

FAQs

Robert J. Mantey
Tuscola County
Drain Commissioner



FREQUENTLY ASKED QUESTIONS about the Day of Review of Drainage District Boundaries and Review of Apportionments

What is a Day of Review of District Boundaries?

The Michigan Legislature passed a law in 2013 to allow revisions to historical drainage district boundaries when recommended by a licensed engineer.

Property owners can review changes with the Drain Office staff during the Day of Review. The proposed boundary revisions can be found on the map on the reverse side of the notice and in more detail at the Tuscola County website at: www.tuscolacounty.org.

What is a Drainage District?

A drainage district is the land area that benefits from the drain. The drainage district makes up the watershed that contributes water to the drain. Each property and municipality within the drainage district pays for maintenance and improvement of the drain.

Why are the boundaries being revised?

Revisions are recommended because the historic drainage district boundaries do not accurately reflect the current watershed of the drain.

What is a Day of Review of Apportionments?

A Day of Review of Apportionments provides an opportunity for property owners to review the percent of benefit of the drain assigned to their property. The apportionments of benefit are based on acreage, land use, and other factors. The apportionments determine the assessment amount for each property for costs of construction or maintenance.

Why are the apportionments being revised?

Parcel apportionments are being revised to more accurately reflect the percentage of benefit that each property receives from the drain.

If a parcel is on the outer boundary of a drainage

district, it is possible that only a portion of the parcel will be assessed.

Why did I receive a notice?

Notices went out to the following property owners:

- **Properties being added to the Drainage District.** The properties were not previously in the drainage district, but the engineers determined that the properties are within the drain's watershed.
- **Properties being removed from the Drainage District.** The properties were previously in the drainage district, but the engineers determined that the properties are not in the drain's watershed.
- **Properties currently in the Drainage District and proposed to remain in the Drainage District.** There is no change in terms of boundaries for these properties.

All property owners subject to an assessment were sent a copy of the notice.

When do I receive my drain assessment?

Drain assessments are included on your Winter Tax bill, and are only levied when costs are incurred for the drain. Assessment amounts vary from year to year.

What is my assessment amount?

Estimated assessment amounts are included in your notice, and are also available at the Day of Review. If you are unable to attend, you may call (989) 672-3820 if you have any questions.

Do I have to attend the Day of Review?

You are not required to attend the Day of Review.

How can I get more information?

Visit our website at www.tuscolacounty.org or call (989) 672-3820.

Robert J. Mantey

Tuscola County Drain Commissioner | 125 W. Lincoln St. Ste. 100 | Caro, MI 48723 | (989) 672-3820 | tuscolacounty.org